

WARNING

- Please read instruction manual completely prior to use
- Do not exceed 35 pounds each/140 pounds total bike weight
- Always secure bicycle frame on the cradles with straps
- Either remove from vehicle or fold up rack and secure straps when not in use

IMPORTANT

It is your responsibility to use your best discretion while installing this carrier to ensure that you do not damage your vehicle.

1. Although the rack is designed to hold the bicycles away from the painted surface of your vehicle, use care when installing and loading your rack to avoid scratching or denting your car.
2. Empty racks are hard to see even with reflective end caps – If you park your vehicle with an empty rack in a high traffic area, it's a good idea to attach a flag or other visible soft item to the end of the rack. Fold arms down when not loaded.

SAFE AND PROPER USE OF YOUR CARRIER

1. **Always** secure your bicycles to the rack using the cradles and straps – use additional cable lock, rope, or **additional shock cords**. The individual cradles offer solid mounting, but should be supplemented for safety.
2. **NEVER** drive off pavement with a loaded carrier.
3. Some hitches are mounted low to the ground – especially when your vehicle is loaded down with gear and people. Use extra caution when entering or exiting driveways to avoid damaging the bike wheels.
4. **DO NOT** let bicycle tires hang near the exhaust pipe. Hot exhaust will melt and destroy tires.
5. If a strap appears worn or frayed, **REPLACE IT! Worn straps are dangerous**. Replacement parts are available from our customer service department at 1-800-456-BELL.
6. Maximum rack load ranges from two bikes/70lbs. to four bikes/140lbs.
7. Inspect and check your rack's straps and attachment bolt before and after loading – the weight of the bicycles may cause the straps to loosen.
8. Check straps at regular intervals during use, more frequently on bumpy roads, and immediately if the bicycles shift position.
9. Always make sure bicycle frames rest **ON** the support cradles.
10. Cleaning bicycle support arms helps give the cradles optimum grip. Clean with soap and water only and rinse/dry thoroughly. Do not use solvents as they may weaken straps and cradles.
11. We recommend that you fold the rack away from the vehicle only when it is unloaded.
12. Never leave unlocked bikes unattended. Thieves are quick! Secure your bikes to the hitch using a cable lock or other visible theft deterrent. **BELL** offers an excellent range of bicycle locks that are portable, effective, and durable.
13. When your rack is not in use and not mounted to your car, find a safe place to store it lying down with the end caps facing up. Do not store it where it can be tripped over or driven into and damaged.

WARNING

This rack is designed to attach securely to most automobile receiver hitches. **Due to variations in automobile design and manufacturing, we cannot guarantee that this product will properly fit ALL cars. It is your responsibility to ensure the safe and proper use of this product.**

Some unique receiver hitches do not permit full insertion of the insert tube. **Do not use the rack if the attachment bolt cannot be threaded through the hole in the receiver hitch and into the nut in the insert tube.**

Some vehicles cannot safely accept any hitch rack. We recommend that you check with your receiver hitch manufacturer to ensure that it has sufficient tongue strength to carry a load of bicycles.

This hitch rack is designed for use on passenger cars, trucks, and SUVs with appropriate receiver capacity. **Do NOT use this hitch mount on fifth wheels, RV's, or tent trailers – these vehicles produce loads that will exceed the capabilities of the rack and cause it to fail!** If you need a rack for one of these applications, speak to your local RV dealer for advice on appropriate methods.

Never use any other attachment method than the supplied bolt and butterfly pin. Using a non-threaded pin or substandard bolt could result in the loss of your rack and load.

Improper attachment or misuse of this rack may be **hazardous** and may result in damage to your bicycles, vehicle, or vehicles driving behind you as a result of colliding with or trying to avoid the fallen bicycles and carrier.

Please keep these instructions for future reference.

IMPORTANT: Remove only by user!

07.12 Instruction Manual #

7047431

WWW.THEBELLGARAGE.COM

© 2014 Bell Sports, Inc. / 1-800-456-BELL
1001 Innovation Road / Rantoul, IL 61866 USA
Made in Taiwan

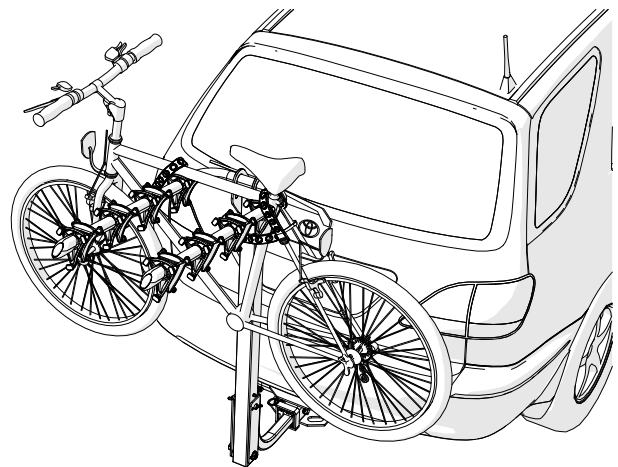
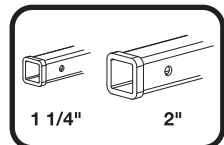
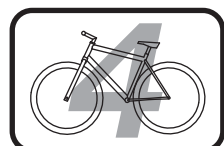


T H E O R I G I N A L

HITCHBIKER™ 450
4 BICYCLE HITCH RACK WITH STABILITY CRADLES

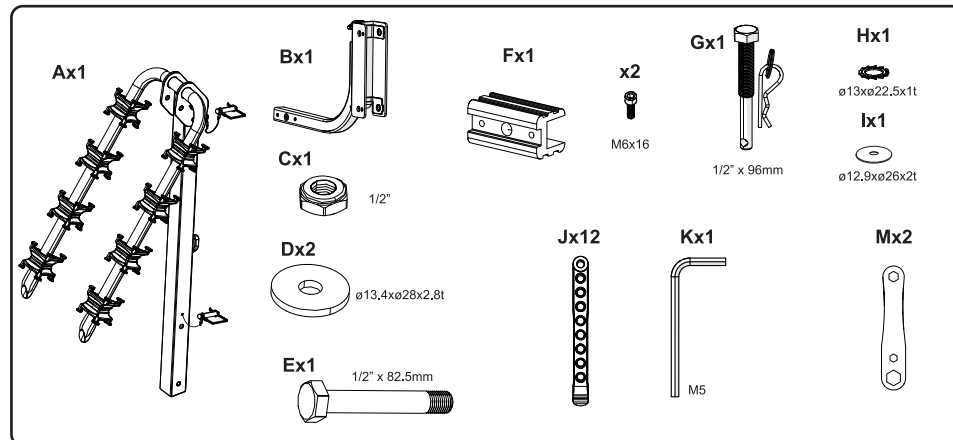


4-Bike Hitch Rack

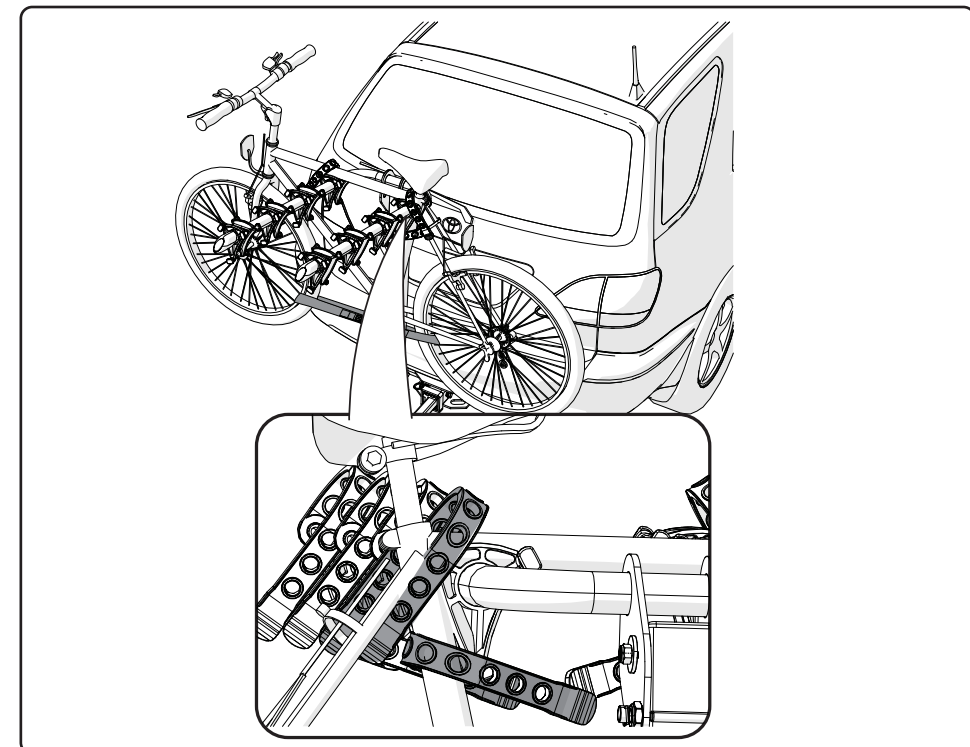


Components

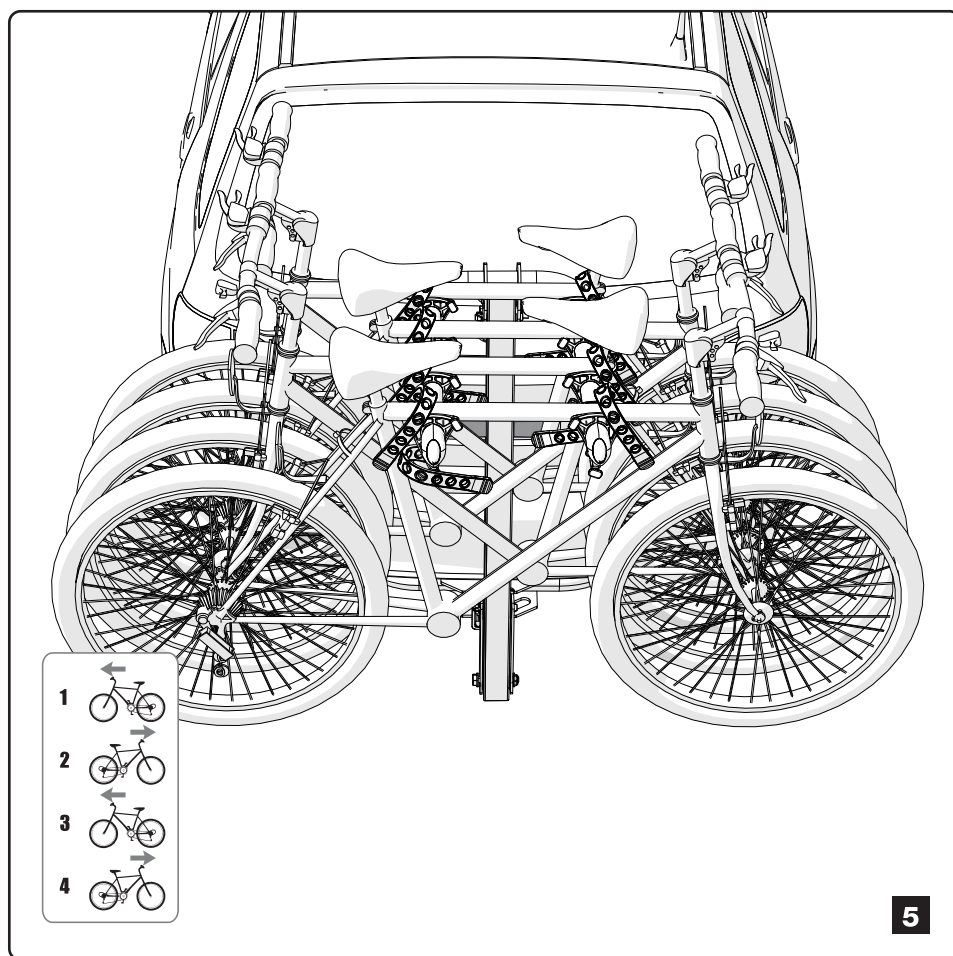
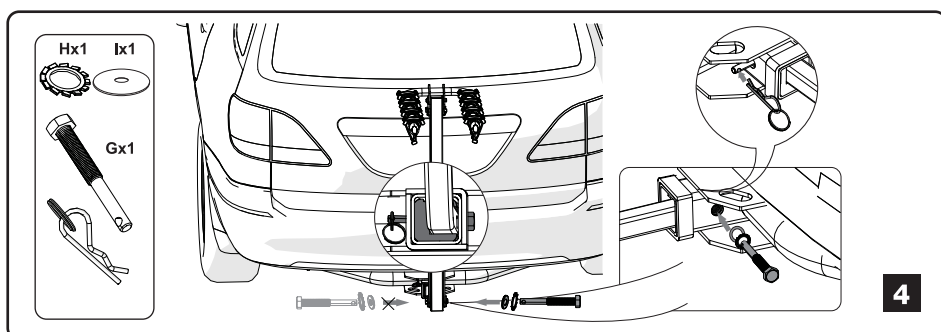
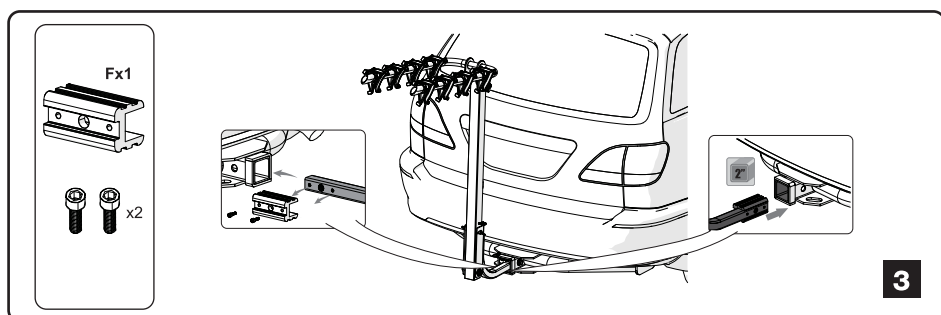
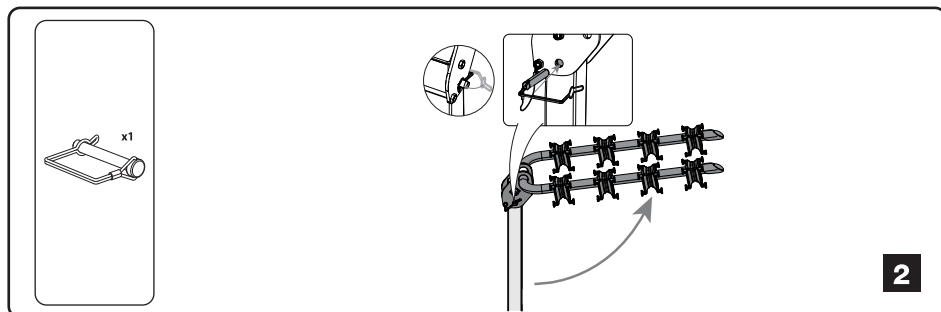
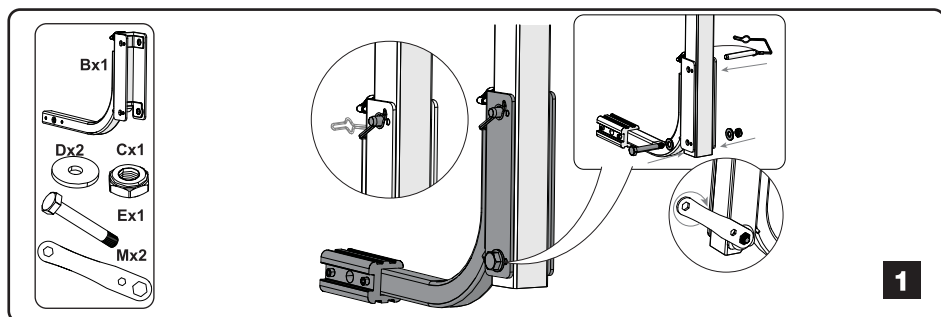
Major components and hardware in separate boxes



Installing the Bikes



Assembly



- 1
- 2
- 3
- 4

Folding the Arms

